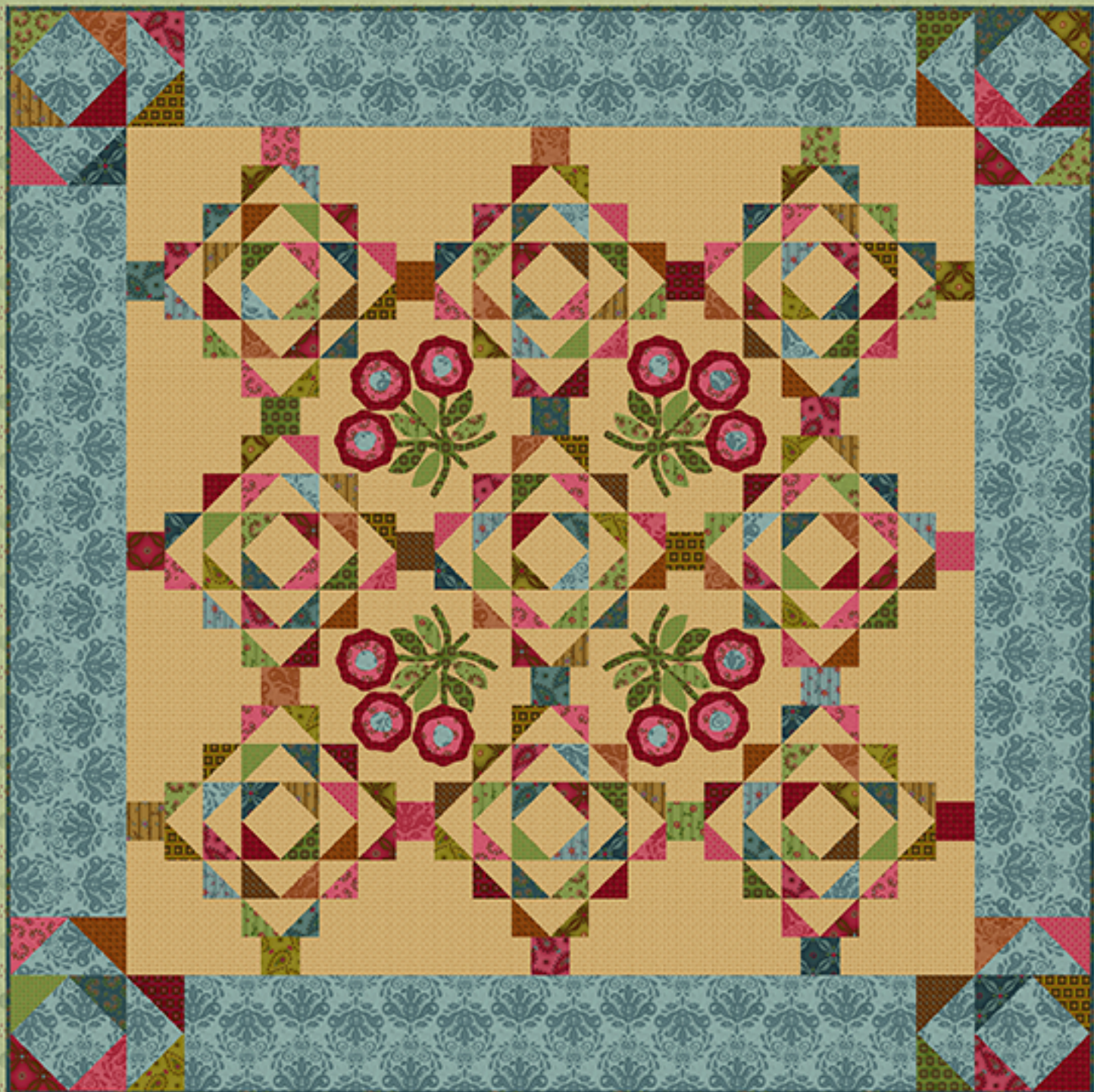


Winsome



Fabrics and Quilt Designed by Kim Diehl



Henry Glass & Co.

49 West 37th Street

New York, NY 10018

tel: 212-686-5194 fax: 212-532-3525

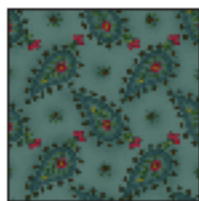
New York: 800-294-9495

www.henryglassfabrics.com

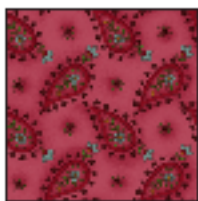
Winsome

Finished Quilt Size: 56 1/2" x 56 1/2"

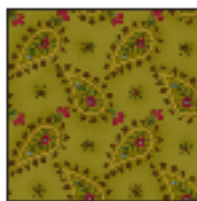
Finished Blocks Size: 12" x 12"



5568-11



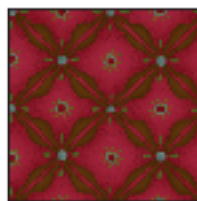
5568-22



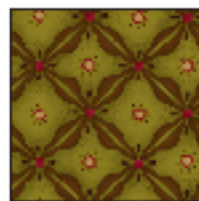
5568-44



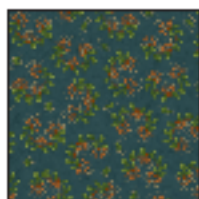
5569-11



5569-22



5569-44



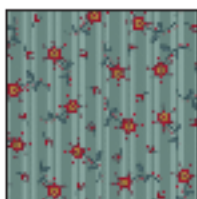
5570-11



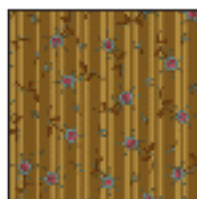
5570-22



5570-66



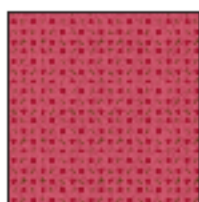
5571-11



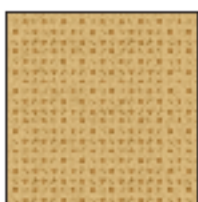
5571-44



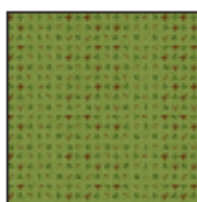
5571-66



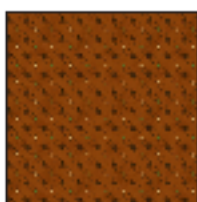
5572-22



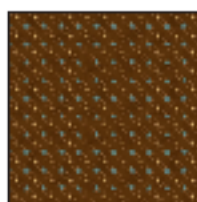
5572-44



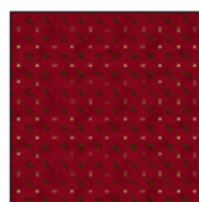
5572-66



5573-30



5573-33



5573-88



5574-11



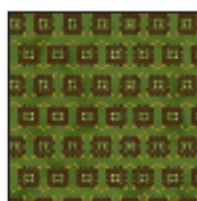
5574-22



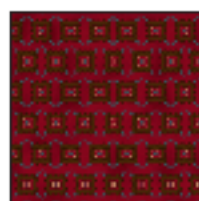
5574-30



5575-44



5575-66



5575-88

Materials

- . 2 1/4 yards of tan print for quilt center background (5572-44)
- . 23 fat quarters (18" x 22") of assorted prints for patchwork and appliques: (5568-11, 22, 44; 5569-11, 22, 44; 5570-11, 22, 66; 5571-11, 44, 66; 5572-22, 66; 5573-30, 33, 88; 5574-11, 22, 30; 5575-44, 66, 88)
- . 1 fat eighth (9" X 22") of red print for flower appliques (5573-88)
- . 1 1/4 yards of medium blue print for border (5574-11)
- . 1/2 yard of dark blue print for binding (5570-11)
- . 62" square of batting
- . 3 1/2 yards of fabric for backing
- . 1/4" bias bar
- . Water-soluble liquid glue for fabric
- . Basic supplies for quilting and your favorite applique method

Cutting

Instructions assume a 42" useable width of fabric after pre-washing and removing selvages. Cut all pieces across the width of fabric unless otherwise noted, in the order given. Please refer to page 3 for applique patterns A through D, and note that they do not include seam allowances.

From the tan print, cut:

1 strip, 4 1/2" x 42"; crosscut into 9 squares,
4 1/2" x 4 1/2"

24 strips, 2 1/2" x 42"; crosscut into:

-- 108 rectangles, 2 1/2" x 4 1/2"

-- 36 squares, 2 1/2" x 2 1/2"

-- 24 rectangles, 2 1/2" x 5 1/2"

-- 8 rectangles, 2 1/2" x 7 1/2"

-- 8 rectangles, 2 1/2" x 12 1/2"

2 strips, 2 7/8" x 42"; crosscut into 18 squares,

2 7/8" x 2 7/8". Cut each square in half diagonally **once** to yield a total of 36 triangles

Winsome

Cutting (continued)

From each of the 23 assorted print fat quarters, cut:
12 squares, 2 1/2" x 2 1/2" (combined total of 276).

Note: You'll have an extra 20 squares for added flexibility as you piece your blocks.

18 squares, 2 7/8" x 2 7/8"; cut each square in half diagonally **once** to yield a total of 36 triangles

24 squares, 2 1/2" x 2 1/2"

32 squares, 3 1/2" x 3 1/2"

From the remaining green print 5575-66, cut:

12 bias strips, 1" x 5 1/2"

4 using pattern D

4 using pattern D reversed

From the remaining red print 5573-88, cut:

12 using pattern A

From the remaining pink print 5570-22, cut:

12 using pattern B

From the remaining medium blue print 5574-11, cut:

12 using pattern C

From the remaining green prints, cut a combined total of:

8 using pattern D

8 using pattern D reversed

From the 1 1/4 yard cut of medium blue print, cut:

1 strip, 6 1/2" x 42"; crosscut into 4 squares,
6 1/2" x 6 1/2"

2 strips, 3 1/2" x 42"; crosscut into 8 rectangles,
3 1/2" x 6 1/2"

4 strips, 6 1/2" x 38 1/2"

From the 1/2 yard cut of dark blue print, cut:

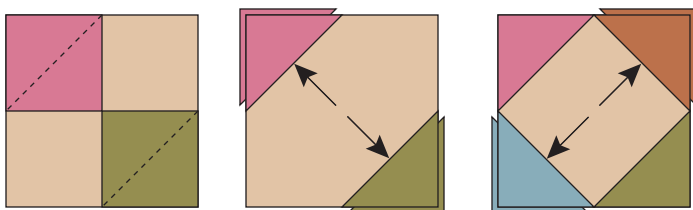
6 strips, 2 1/2" x 42" (binding)

Piecing the Blocks

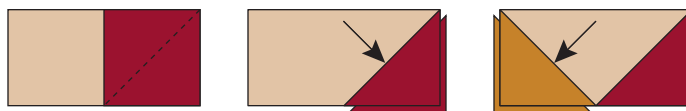
Sew all pieces with right sides together using a 1/4" seam allowance unless otherwise noted.

1. Using a mechanical pencil and acrylic ruler, lightly draw a diagonal line on the wrong side of each assorted print 2 1/2" and 3 1/2" square. Reserve the prepared 3 1/2" squares for later use.

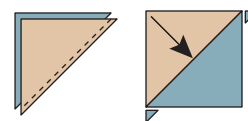
2. Layer a prepared assorted print 2 1/2" square over two opposite corners of a tan print 4 1/2" square. Stitch the layers together on the drawn lines. Fold back the top layer at each corner to form a triangle; press from the front. Trim away the excess layers beneath each top triangle, leaving a 1/4" seam allowance. Repeat with the remaining corners. Repeat this step for a total of nine square-in-a-square units measuring 4 1/2" square.



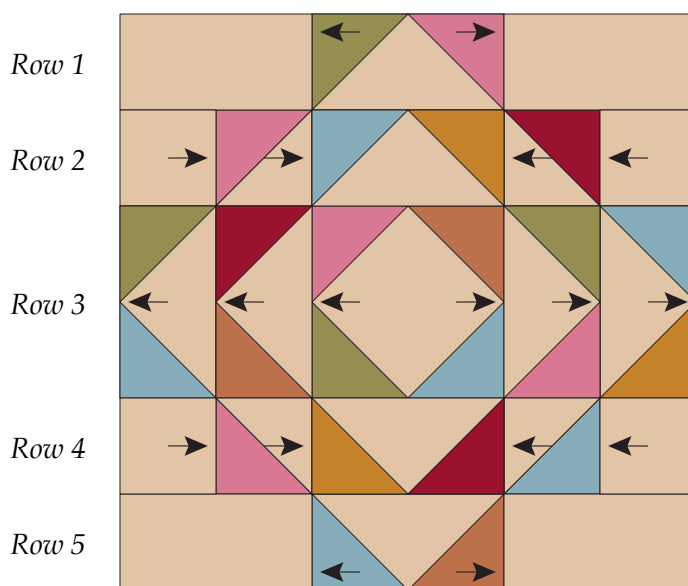
3. Layer a prepared assorted print 2 1/2" square onto one end of a tan print 2 1/2" x 4 1/2" rectangle. Stitch, press, and trim as instructed in step 2. Repeat with the remaining end, placing the prepared square to form a mirror-image triangle. Repeat this step for a total of 72 pieced triangle units measuring 2 1/2" x 4 1/2".



4. Layer an assorted print 2 7/8" triangle with a tan print 2 7/8" triangle. Stitch the pair together along the long edges. Press the seam allowance toward the assorted print. Trim away the dog-ear points. Repeat for a total of 36 half-square-triangle units measuring 2 1/2" square.



5. Using the pictured quilt as a guide, lay out one square-in-a-square unit, eight pieced triangle units, four half-square-triangle units, four tan print 2 1/2" x 4 1/2" rectangles, and four tan print 2 1/2" squares in five horizontal rows to form a block. Join the pieces in each row. Press the seam allowances of rows 1, 3, and 5 away from the center unit. Press the seam allowances of rows 2 and 4 toward the center unit. Join the rows. Press the seam allowances open. Repeat for a total of nine pieced blocks measuring 12 1/2" square, including the seam allowances.



Piecing the Quilt Center

1. Lay out two tan print 2 1/2" x 7 1/2" rectangles, three assorted print 2 1/2" squares, and two tan print 2 1/2" x 12 1/2" rectangles as shown at the bottom of this page. Join the pieces. Press the seam allowances toward the assorted prints. Repeat for a total of four pieced sashing rows.

2. Join a tan print 2 1/2" x 5 1/2" rectangle to opposite sides of an assorted print 2 1/2" square. Press the seam allowances toward the assorted print. Repeat for a total of 12 pieced sashing units.

3. Referring to the pictured quilt, lay out four pieced sashing units and three blocks in alternating positions. Join the pieces. Press the seam allowances toward the sashing units. Repeat for a total of three block rows.

4. Referring to the pictured quilt, lay out four pieced sashing rows and three block rows in alternating positions. Join the rows. Press the seam allowances toward the sashing rows. The pieced quilt center should now measure 44 1/2" square, including the seam allowances.

Appliquéing the Quilt Center

1. With wrong sides together, use a scant 1/4" seam allowance (stitching with a scant seam allowance should eliminate the need to trim it) to stitch along the long raw edges of each green print 1" x 5 1/2" rectangle to make a tube. Use the bias bar to press each tube flat, centering the seam allowance so it will be hidden from the front. Apply tiny dots of liquid glue underneath the pressed seam allowances at approximately 1/2" intervals; heat-set the glue basted seams with a hot, dry iron to enable the seam to lay flat and reduce fraying.



2. Turn under one raw end of each prepared stem approximately 1/4", apply a dot of liquid glue under the folded end, and heat set it with a hot, dry iron.

3. Fold the quilt center in half diagonally and lightly press a crease from the middle triangle point of the center block out to the middle triangle point of the corner block. Repeat for each corner of the quilt center.

4. Using the pictured quilt as a guide, lay out three red A flower appliques onto one creased background area, positioning the middle flower onto the crease to center it; pin in place. Dot the seam allowance of a prepared 5 1/2" stem with liquid glue and press it firmly onto the background crease, tucking the raw end underneath the flower approximately 1/4". In the same manner, glue baste and lay out a prepared 5 1/2" stem on each side of the center stem as pictured. Lay out an assorted green print D and D reversed leaf appliqué on each side of the center stem, positioning them with the tip of the widest end at the center stem. Add two additional D and D reversed leaves, turning them so the opposite tips join the side stems. When everything is to your liking, remove the flower appliques and use your favorite appliqué method to stitch the leaves and stems in place.

5. Work from the bottom layer to the top to continue stitching the A, B, and C appliques in place.

6. Repeat steps 4 and 5 to complete the appliqué on the remaining background areas.

Piecing and adding the Border

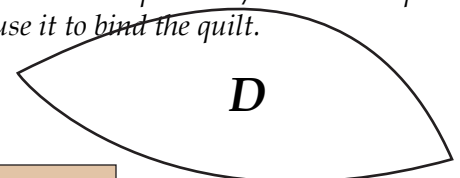
1. Using the reserved assorted print 3 1/2" squares and the medium blue print 6 1/2" squares, follow step 2 of "Piecing the Blocks" to make four square-in-a-square units.

2. Using the remaining reserved assorted print 3 1/2" squares and the medium blue 3 1/2" x 6 1/2" rectangles, follow step 3 of "Piecing the Blocks" to make eight pieced rectangle units.

3. Referring to the pictured quilt, join a pieced rectangle unit to each end of the medium blue print 6 1/2" x 38 1/2" strips. Press the seam allowances toward the blue strips. Join a pieced blue strip to the right and left sides of the quilt center. Press the seam allowances toward the blue strips. Join a square-in-a-square unit from step 1 to each end of the remaining pieced blue strips. Press the seam allowances away from the square-in-a-square units. Join these strips to the remaining sides of the quilt center. Press the seam allowances toward the blue strips. The pieced quilt top should now measure 56 1/2" square.

Completing the Quilt

Layer the quilt top, batting, and backing. Quilt the layers as desired. Join the six dark blue print 2 1/2" x 42" strips into one length and use it to bind the quilt.



Piecing the Quilt Center Step 1 Diagram

