

Along the Fence



Fabrics and Quilt Designed by Kim Diehl



Henry Glass & Co.

49 West 37th Street

New York, NY 10018

tel: 212-686-5194 fax: 212-532-3525

New York: 800-294-9495

www.henryglassfabrics.com

Along the Fence

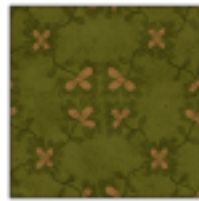
Finished Quilt Size: 66 1/2" x 66 1/2"

Finished Block Size: 6" x 6"

Materials



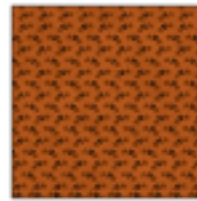
5332-33
fat quarter



5332-66
fat quarter



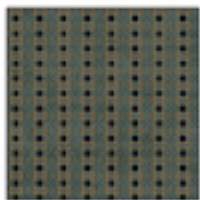
5332-88
fat quarter



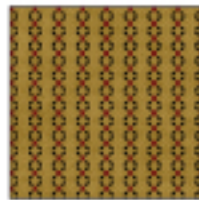
5333-33
fat quarter



5333-55
fat quarter



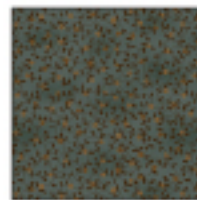
5334-11
fat quarter



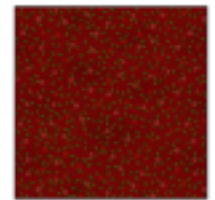
5334-44
fat quarter



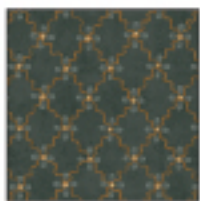
5334-88
fat quarter



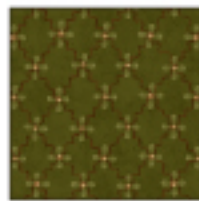
5336-11
fat quarter



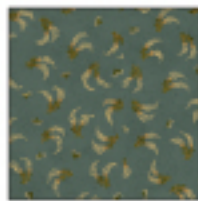
5336-88
fat quarter



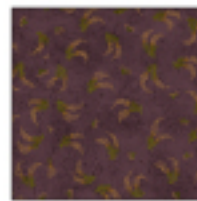
5337-11
fat quarter



5337-66
fat quarter



5338-11
fat quarter



5338-55
fat quarter



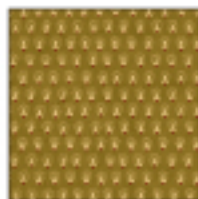
5338-88
fat quarter



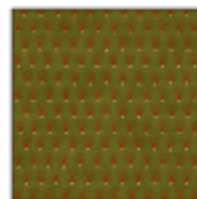
5339-55
fat quarter



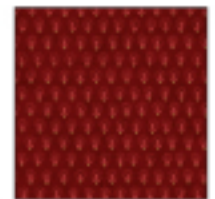
5339-66
fat quarter



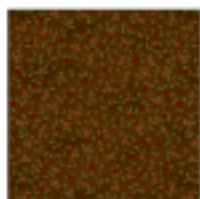
5340-44
fat quarter



5340-66
fat quarter



5340-88
fat quarter



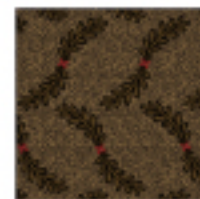
5336-33
1/2 yard



5333-44
3/4 yard



5337-44
3/4 yard



5339-99
2 yards

Additional Materials Required: 4 yards coordinating fabric for quilt backing.

ALONG THE FENCE

Finished quilt size: 66 1/2" square

Finished block size: 6" square

Materials

- 20 fat quarters (18" x 22") of assorted prints for patchwork, leaf appliqués, yo-yos, and binding: 5332-33, 66, 88; 5333-33, 55; 5334-11, 44, 88; 5336-11, 88; 5337-11, 66; 5338-11, 55, 88; 5339-55, 66; 5340-44, 66, 88
- 1/2 yard of brown print for patchwork, vines, yo-yos, and binding: 5336-33
- 3/4 yard each of 2 assorted neutral prints for inner border: 5333-44; 5337-44
- 2 yards of soft black print for patchwork, yo-yos, and outer border: 5339-99
- 72" square of batting
- 4 yards of fabric for backing
- 3/8" bias bar
- Size 5 embroidery needle and #8 or #12 Perle cotton for gathering yo-yo centers
- Water-soluble liquid glue for fabric
- Basic supplies for quilting and your favorite appliqué method

Cutting

Please cut all pieces across the width of fabric unless otherwise noted, in the order given.

From the length of the black print, cut:

2 strips, 6 1/2" x 54 1/2"

2 strips, 6 1/2" x 66 1/2"

Note: Because there is little or no stretch to these lengthwise pieces, you may wish to cut them slightly longer than needed; any extra length can be trimmed away after the borders have been added to the quilt top.

From the fat quarters of assorted prints, the brown print, and the remaining black print, cut a combined total of:

49 squares, 6 1/2" x 6 1/2"

196 squares, 2 1/2" x 2 1/2"

Enough random-length 2 1/2"-wide strips to equal 275" of binding when joined together

From the bias of the remaining brown print, cut:

Enough 1 1/4"-wide strips to make four lengths, 65" each, when joined together end to end using straight, not diagonal, seams

From the remainder of the fat quarters (excluding the green prints), the brown print scraps, and the black print scraps, use the yo-yo pattern to cut a combined total of:

36 circles, without adding a seam allowance (Please see step 5 of "Appliquing and Adding the Inner Border" for a yo-yo tip)

From the remainder of the green prints, use the leaf pattern to cut a combined total of:

48 leaf appliqués (remember to add seam allowances for any method with turned-under edges)

From each of the two neutral prints, cut:

28 rectangles, 3 1/2" x 6 1/2" (combined total of 56)

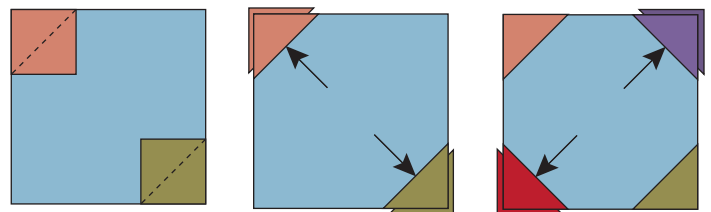
2 squares, 6 7/8" x 6 7/8" (combined total of 4); cut each square in half diagonally once to yield a combined total of 8 triangles

Piecing the Blocks

Sew all pieces with right sides together, using 1/4" seam allowance unless otherwise noted.

1. Using a pencil and acrylic ruler, lightly draw a diagonal line on the wrong side of each assorted print 2 1/2" square.

2. Layer a prepared 2 1/2" square onto two opposite corners of an assorted print 6 1/2" square. Stitch the layers together on the drawn lines. Fold the inner corners of the small stitched squares back to form triangles, aligning the raw edges with each corner of the larger square; press. Trim away the excess layers beneath the top triangles, leaving 1/4" seam allowances. In the same manner, stitch, press and trim the remaining corners. Repeat for a total of 49 pieced blocks measuring 6 1/2" square, including the seam allowances.



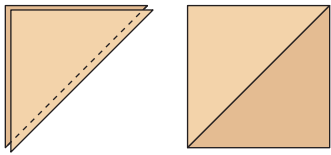
Piecing the Quilt Center

Referring to the pictured quilt, lay out the pieced blocks in seven rows of seven blocks. Join the blocks in each horizontal row. Press the seam allowances of each row in one direction, alternating the direction of each row to allow them to nest together when the rows are pieced. Join the rows. Press the seam allowances in one direction. The pieced quilt center should now measure 42 1/2" square.

Adding and Appliquéing the Inner Border

1. Select seven rectangles from each neutral print, for a combined total of 14. Referring to the pictured quilt, lay out the rectangles in alternating positions to form a row; stitch the pieces. Press the seam allowances in one direction. Repeat for a total of four identical pieced rows measuring 6 1/2" x 42 1/2", including the seam allowances.

2. Join together two assorted neutral print 6 7/8" triangles (one from each print), stitching along the diagonal edges. Press the seam allowances to one side. Trim away the dog-ear points. Repeat for a total of four half-square triangles.



3. Join a pieced neutral print row to the right and left sides of the quilt center. Press the seam allowances toward the neutral print. Referring to the pictured quilt, join a neutral print half-triangle square to each end of the remaining pieced rows. Press the seam allowances away from the half-triangle squares. Join these rows to the remaining sides of the quilt center. Press the seam allowances toward the neutral print.

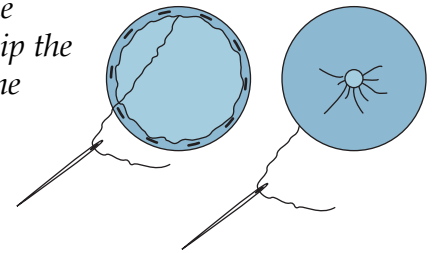
4. Using straight seams, join the lengths of 1 1/4"-wide brown print together to make a 65" strip. Press the seam allowances to one side, all in the same direction. With wrong sides together, use a scant 1/4" seam to stitch along the long raw edges to make a tube. Use the bias bar to press the tube flat, centering the seam allowance so it will be hidden from the front. Repeat for a total of four prepared vines.



5. Select an assorted print yo-yo circle. With the wrong side up, turn a portion of the edge toward you about a scant 1/4" to create a hem. Using a knotted length of Perle cotton and a size 5 embroidery needle, bring the needle up through the fabric from the wrong side of the hem to bury the knot between the layers, near the folded edge.

Continue turning the hem to the back and making stitches about 1/4" in length through the layers as you work your way around the circle to your starting point; gently pull the threaded needle to gather the yoyo edges to the center. Insert the needle under the gathered hem just to the side of the center, and bring it out on the back. Knot and clip the thread, keeping the gathers taught.

Repeat for a total of 36 yo-yos.



TIP: If you like the convenience of using modern quilting tools, Clover's "Quick" Yo-yo Maker in the large size will produce finished yo-yos that are perfect for this project.

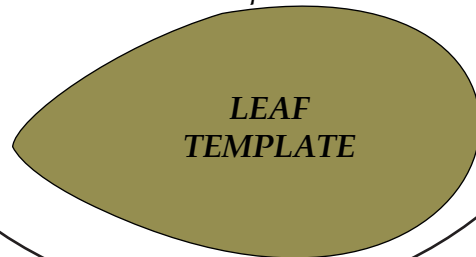
6. Using the pictured quilt as a guide, lay out one prepared vine on each side of the inner border, cutting away any excess length. For smooth curves and pin-free stitching, apply small dots of water-soluble liquid glue at about 1" intervals to the bottom seamed side of the vines to baste them in place; use an iron on a hot, dry setting to heat-set the prepared vines from the back. For each side of the border, lay out and baste nine yo-yos and 12 leaves along the vine. Use your favorite appliqué method to stitch the vines, yoyos, and leaves in place.

Adding the Outer Border

Join the black print 6 1/2" x 54 1/2" strips to the right and left sides of the quilt top. Press the seam allowances toward the black print. Join the black print 6 1/2" x 66 1/2" strips to the remaining sides of the quilt top. Press the seam allowances toward the black print. The pieced and appliquéd quilt top should now measure 66 1/2" square.

Completing the Quilt

Layer the quilt top, batting, and backing. Quilt the layers as desired. Join together the random lengths of 2 1/2"-wide assorted prints to make a 275" strip and use it to bind the quilt.



YO-YO
TEMPLATE